



ISLA PLANA - CARTAGENA - MURCIA - SPAIN



SEA

All along the coast here, hidden below the azure waters, there are vast meadows of Neptune grass. This type of seagrass, which is endemic to the Mediterranean and not found in any other sea in the world, gives the water its turquoise blue colour.

EXCLUSIVITY

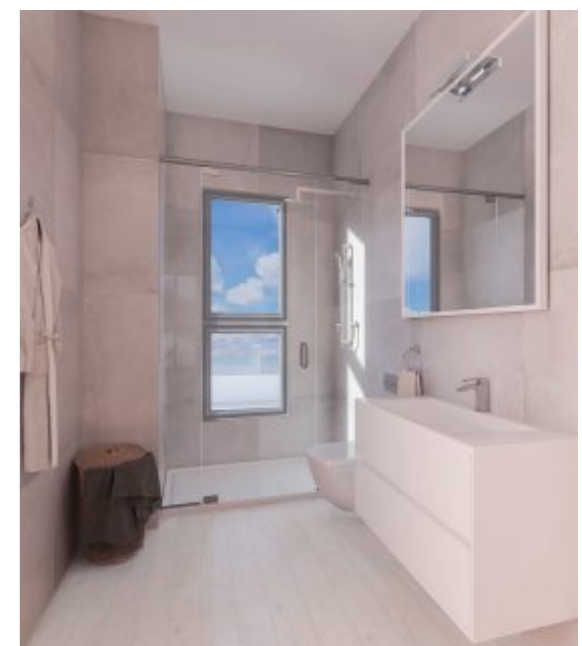
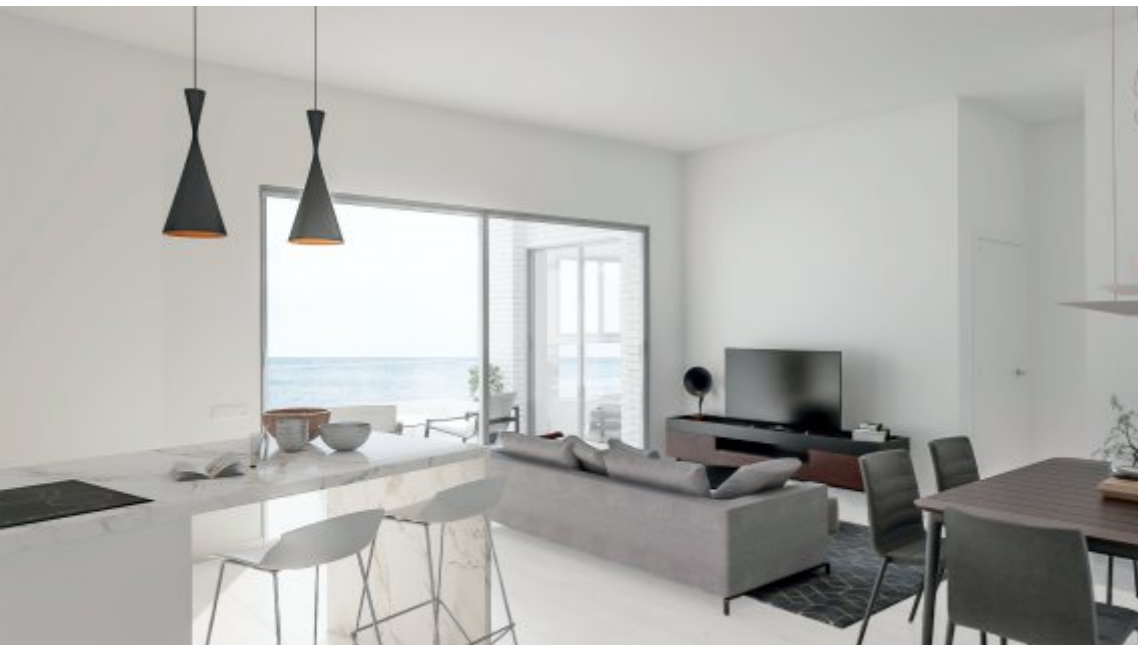
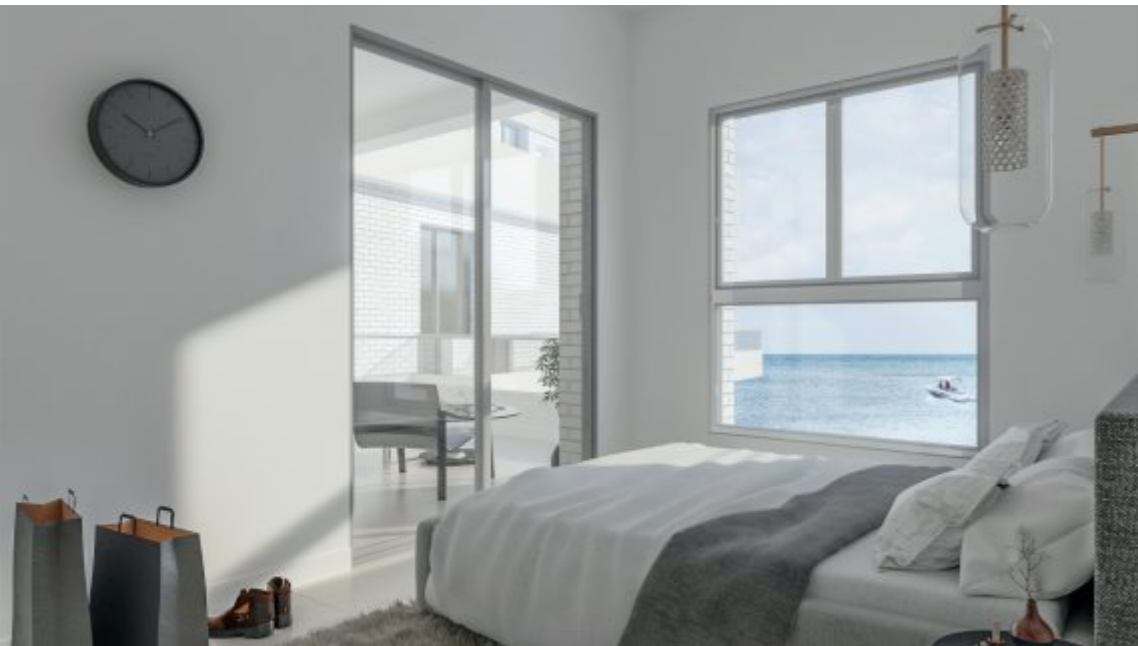
This property development was based on the three pillars of quality, versatility and sustainability, with a vision of offering unique properties with sea views.

ARCUITECTURE

With a minimalist design, and stepped terraces overlooking the water, the development has excellent panoramic views of the perpetually calm, blue sea.



- > 1, 2 & 3 bedroom apartments and penthouses.
- > Terraces overlooking the Mediterranean.
- > Sea views forever.



BALANCE between
INDOOR and
OUTDOOR spaces.

WE HAVE A GOOD AND CAREFUL MEMORY OF QUALITIES

MAREA PLANA MEANS QUALITY CONSTRUCTION.



> The building is **South and East facing**, and all the terraces have **sea views**.

> **Façades with white facing bricks**. Floor slabs and parapets clad with large porcelain panels. **Glass balustrades for protection** on terraces.

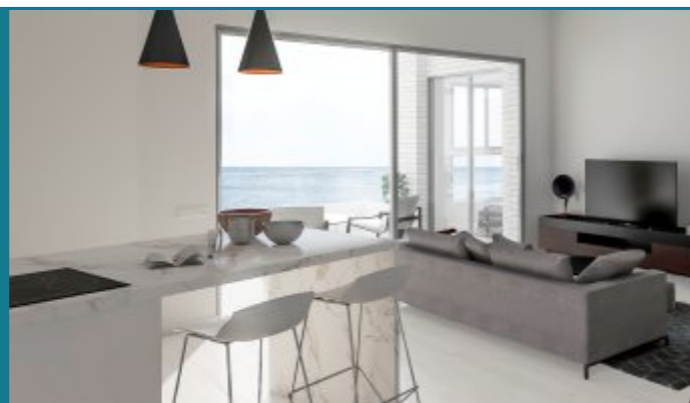


> **Communal pools** for adults and children, and communal **garden area**.

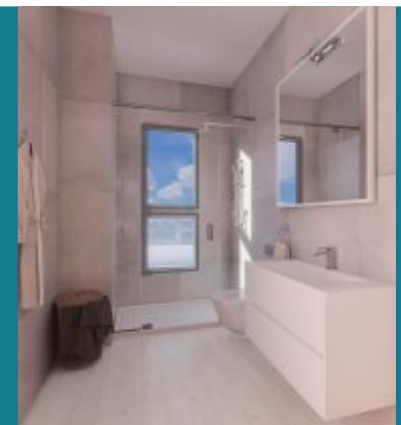
> **Sunken forecourt** with basement access ramp.

> **Fully equipped kitchen with panelled Balay appliances** (fridge, oven, microwave, glass-ceramic induction hob, dishwasher, designer extractor hood and washer-dryer), and **Compact marble worktops** in your choice of colour.

> **PARADOR brand wood laminate flooring** throughout, including kitchen and bathroom, with an unlimited wear guarantee. Twelve models to choose from. **Porcelain floor tiles on terraces**.



- > **Wall-hung washbasins** in all bathrooms.
- > **Resin shower trays** in bathrooms; several colour options. Shower screens and thermostatic shower.
- > Bathrooms and kitchens finished with **porcelain tiles**.



- > **Smooth walls and ceilings** in your choice of colour.
- > Fully lined **floor-to-ceiling built-in wardrobes**.
- > **Inverter air-conditioning** machine with installed ducts and heat pump.



> Exterior carpentry in aluminium with **double-glazing**, to improve energy efficiency and comfort.

> **Oak or white-lacquer doors** with magnetic closure.



- > **Community water softener system**.
- > **LED lights** with motion detectors in communal areas.
- > **Bike rack** in each garage parking space.
- > **Video surveillance** in hallways and on garage ramp.

> **Promenade and garden in front of the residential.**



In **MAREA PLANA**,
take care to the last detail.



MURCIA Costa Cálida

The Region of Murcia is in an enviable location at the heart of the Mediterranean. It is conveniently connected to all principal European destinations with daily flights from Alicante and San Javier airports, with the new Corvera airport set to open in 2018. The excellent transport network is complemented with the spectacular port of Cartagena.



Why choose Marea Plana?

It is a unique development designed with all ages in mind.

A unique development designed for all the family, located at the heart of Isla Plana and overlooking the sea. Surrounded by communal areas, with good public transport connections and easy access to all the main leisure areas, it is ideal for both children and adults.

Unbeatable surroundings

Living in Marea Plana

Living in Marea Plana means living a Mediterranean lifestyle – long days by the sea, life outdoors and a wide variety of leisure pursuits to choose from, including sports, cultural attractions and family activities.



Now is the time.

Contemplate breathtaking views, savour the moment, lose yourself in the sunrise or find yourself at sunset... All this and more awaits you at Marea Plana.



Golf courses.

Spend a day on your favourite pastime with courses just a few minutes away.



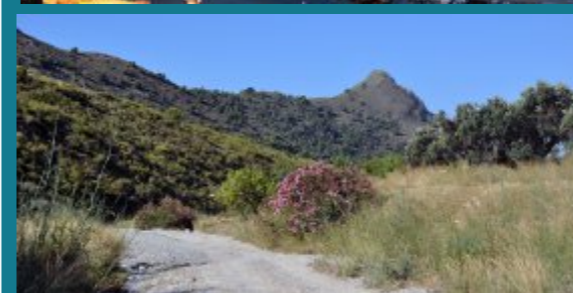
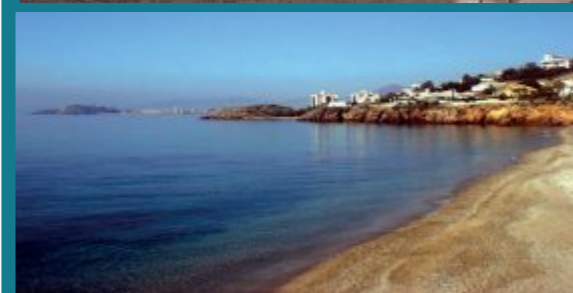
Connected.

The Region of Murcia is connected to the main airports on the coast.



Port.

20 minutes to the spectacular port of Cartagena.



A PLACE TO TRULY ENJOY

- > Isla Plana is a traditional fishing village to the south of Cartagena and close to the neighbouring town of Mazarrón. Here the mountains meet the sea, creating a Mediterranean climate, with mild temperatures, gentle breezes and more than 3,200 hours of sunshine per year.
- > It is a quiet, residential area with a wide choice of leisure activities, and a broad range of shops and restaurants. As it belongs to the district of Cartagena, communications with the port city are good. The city of Cartagena is more than 2,500 years old and its wealth of monuments reveals its glorious past. The Roman Theatre and emblematic port are the best representations of its fascinating history.
- > The area surrounding Isla Plana is ideal for relaxing and enjoying the natural mountain and marine environments on your doorstep. There is a wide range of activities on offer: sailing, diving, hiking trails, cuisine, cultural events, etc. The long natural beaches are perfect for water sports: sailing, diving, windsurfing, etc.
- > The village's proximity to the 'Valle del Cañar' forest nature reserve invites you to explore its breathtaking landscapes. Activities include hiking and cycling trails, potholing, climbing, paragliding, etc.
- > There are several golf courses in the vicinity, including Camposol Golf, Alhama Signature Golf and Hacienda del Álamo.



A step away from everything you could wish for;
a step away from peace and tranquillity.

A PLACE TO LIVE

Both Isla Plana and the Region of Murcia in general enjoy a mild climate. With more than 300 days of sunshine a year, MAREA PLANA is ideal for rest, relaxation, and a holiday by the sea. Fun and tranquillity on the shores of the Mediterranean.

THE DEVELOPER AND THE ARCHITECT HAVE WORKED CLOSELY TOGETHER TO CREATE A PARADISE WHERE THE SEA IS A KEY FEATURE.

MAREA PLANA

exclusive - residencial



mareaplanaresidencial.es

DAVID

BERMEJO

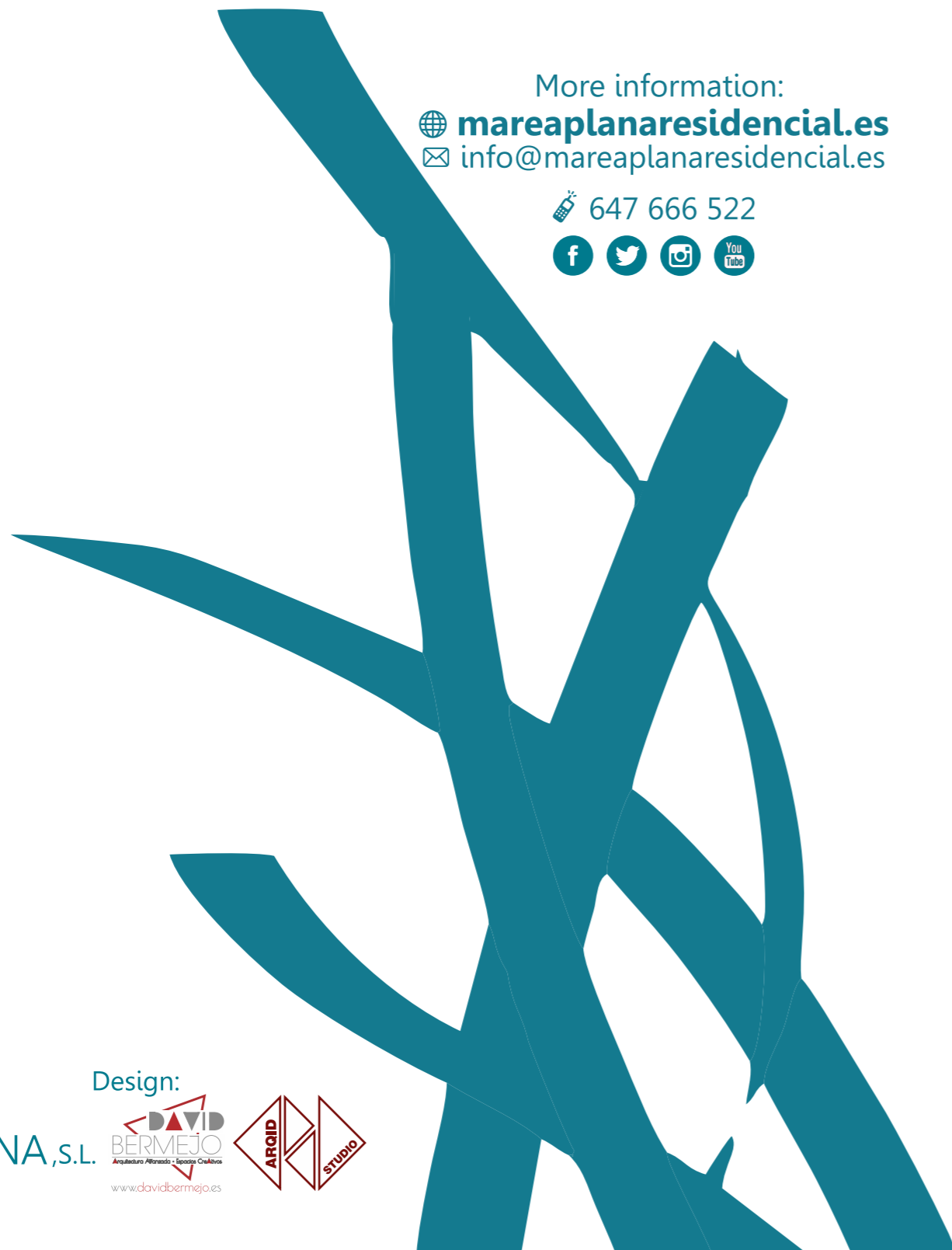
Arquitectura Avanzada • Espacios Creativos

davidbermejo.es



ARQID STUDIO

ARQUITECTURA Y DISEÑO



More information:

 **mareaplanaresidencial.es**
 info@mareaplanaresidencial.es

 647 666 522



Promote:

MAREA PLANA,S.L.

Design:

